



Xiamen Yumi Imp.&Exp. Co., Ltd.

Unit 1304-3, Building 59, Chengyi North Street,
Phase III, Xiamen Software Park, Xiamen, China

+86-592-6095031

admin@yumisteel.com

yumisteel.com; yumisteelmaterial.com.

GREEN CONTAINER OFFICE BUILDING

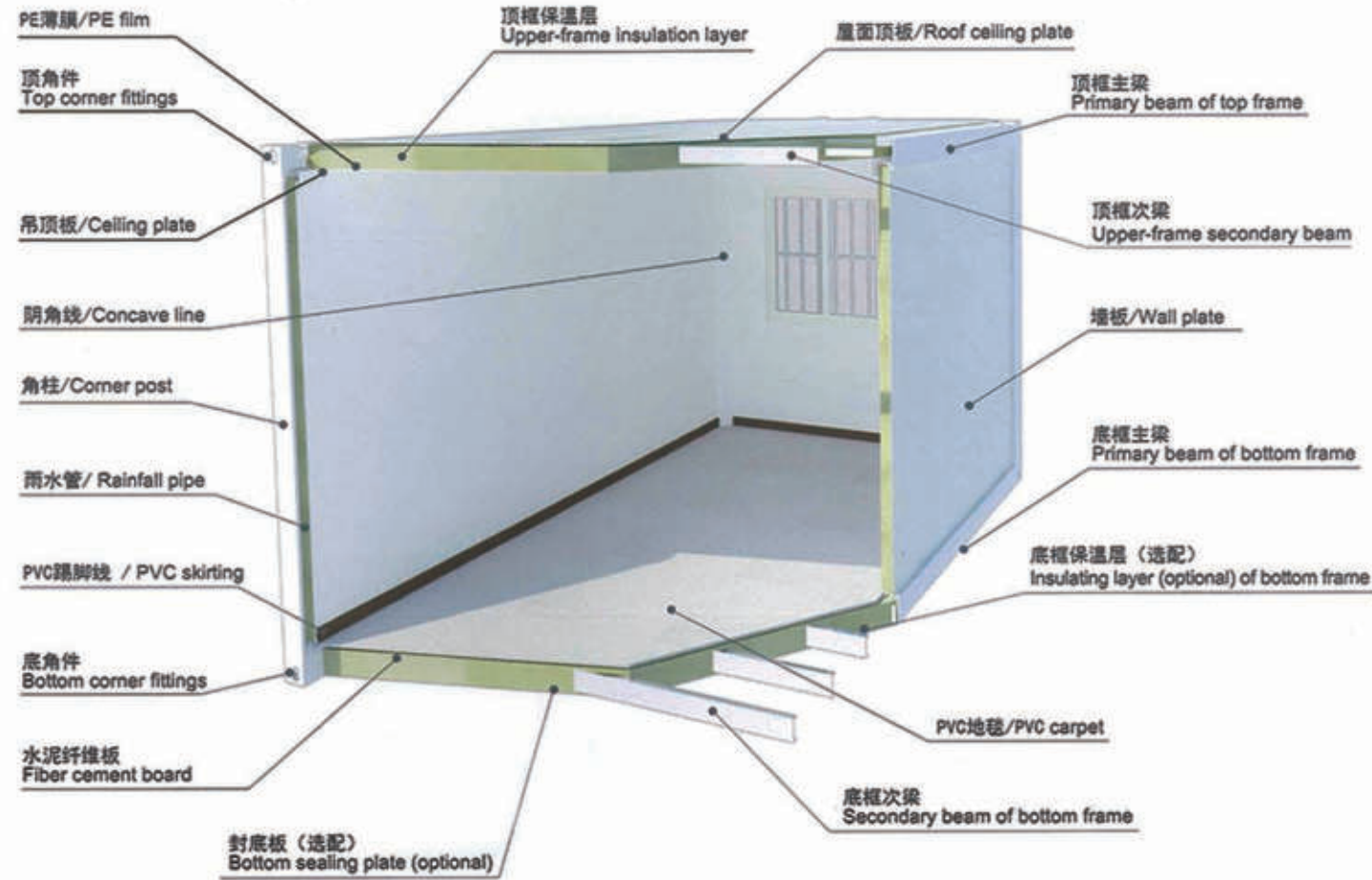


Make a better building



Standard container

>> Flat packed type



Flat-packed Modular House matches ISO dimensions and have the advantages of international transport. The construction is based on a stable frame and interchangeable wall panels. The individual modular houses can be stood side-by-side in longitudinal and transverse direction without limits. It also can be stacked to 3 stories height on top of each other. Individual sizes of space can be achieved by removing outer wall panels and fitting partitions. The flat-packed modular houses can be delivered assembled or individually — in packages 647mm high. The storeys of flat packed container house can't be over 3.

Standard container

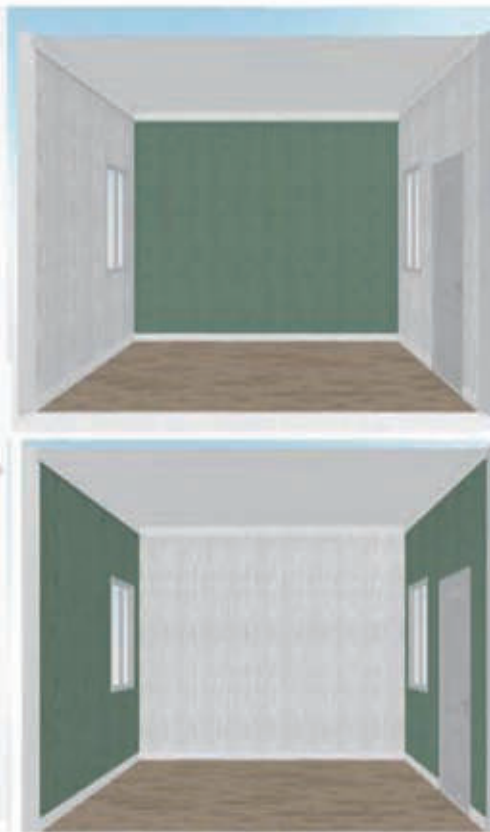
>> Quick assembled type



Compared to flat packed type, the roof and floor part are already made in our workshop, all the material of quick assembled type are scattered, this requires customer to install all the part at site. The advantage is the cost is more competitive than flat packed type.

Decoration material

Internal decorative fiberboard



Decoration material

PU metal panels for external



Various colors for choices, Environmental protection~

Bamboo-wood fiber integrated wallboard adopts foreign imported polymer nanotechnology, original ecological bamboo fiber, polymer waterproof and fireproof material, spar powder high temperature pressing, and the surface adopts high-end fashion decorative film high-temperature laminating or rolling coating technology, very environmentally friendly and fashionable. The surface treatment is all made of environmentally friendly materials, without paint components, the decorated room has no peculiar smell, and there is no harmful ingredient to the human body, completely bid farewell to formaldehyde, and truly achieve zero carbon and zero emissions.

PU insulated metal panels provide unique aesthetics through a wide range of profiles while delivering excellent thermal performance. Our panels are built to your specifications, ensuring they are perfect for your needs. We only use the highest quality materials, long life automotive grade rust-proof paint, producing superior products that are durable.

Exterior of insulated panels mainly consists of: Al-Zn alloy coated steel sheet (55% aluminum) treated with special fabrication processing on the surface, high density polyurethane (PU/PUR) as core and aluminum paper or steel sheet. The endurance quality of Al-Zn alloy coated steel sheet with 55% aluminum is 3-6 times higher than that of galvanized steel sheet and aluminum steel sheet (recognized by the World Steel Association). Our Insulated metal panels are available in thicknesses 16mm, 25mm and 50mm.

High R-Value, Energy efficient!

Decoration material

Wall claddings

Corrugated metal roof is using color coated steel or aluminum alloy metal sheets and cold-rolled into various profiled sheets by rolling equipment. Corrugated metal roof or steel sheets are an energy-efficient, low cost, and long-lasting roofing and wall cladding option for homes, log cabins, and commercial building envelope applications.



Details



Optional basic
power distribution



Thermal insulation
wall panel



Seamlessly integrated
ceiling



Fireproof & moisture
-proof floor



Seamlessly connected
corner pieces



PVC Down pipe
corner pieces

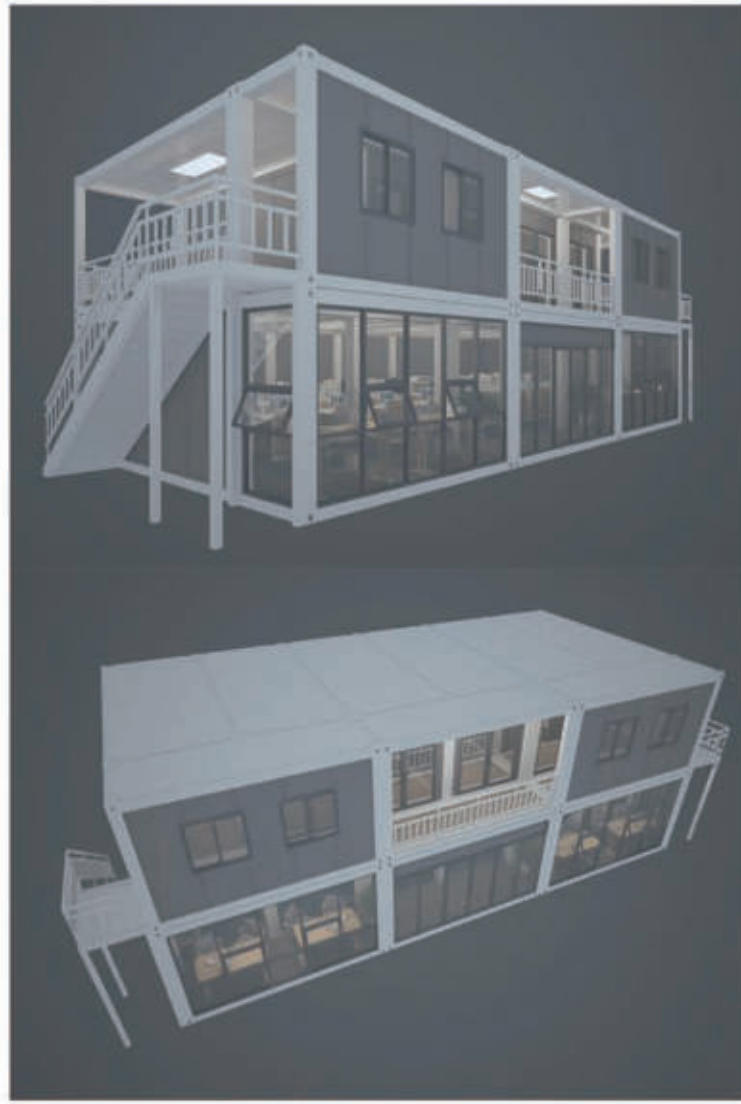


YMCTNO-01



YMCTNO-02

YMCTNO-03



Three-story office building



YMCTNO-04

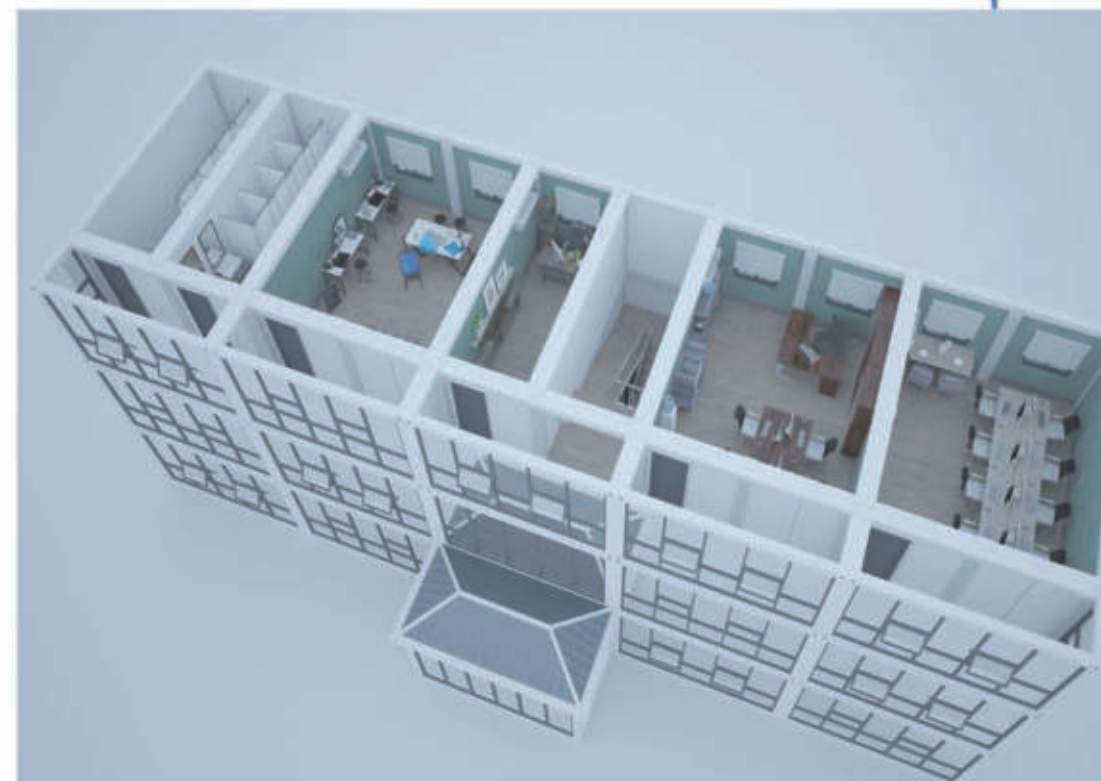
The office building can accommodate 80-100 people. The internal configuration and partition can be changed according to customer needs.

Floor plan reference



Floor plan reference

Customized



YMCTNO-05

*Your dream
office building*



Ground floor

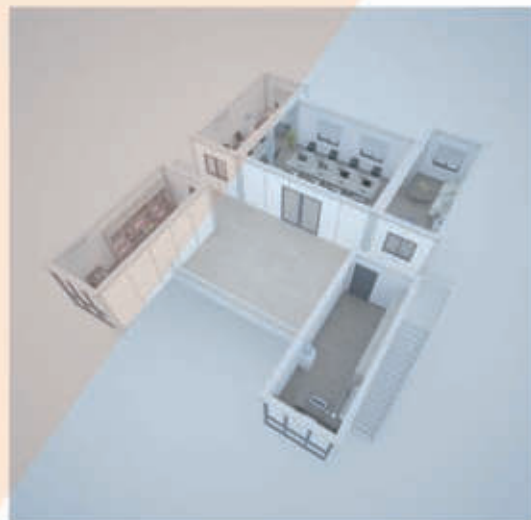
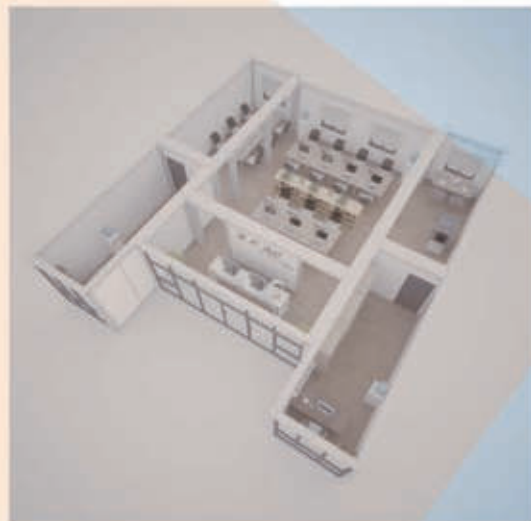
First floor



YMCTNO-06



YMCTNO-07



Modular Building

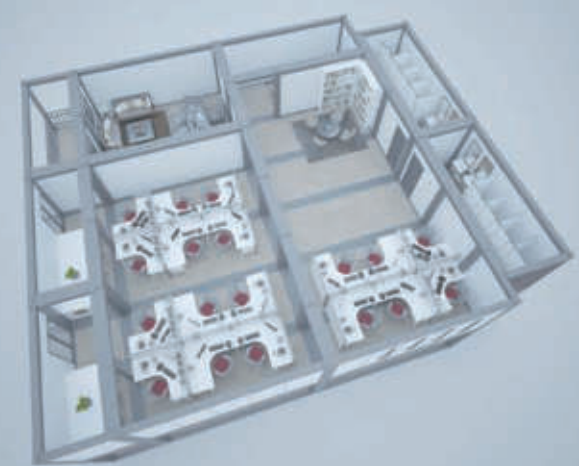
YMCTNO-08





Ground floor

First floor



YMCTNO-09

**GREEN & MODULAR
CONTAINER OFFICE**



YMCTNO-10

